

The logo for The London Resort, featuring the words 'THE LONDON RESORT' in a bold, white, sans-serif font. 'THE' is positioned above 'LONDON', and 'RESORT' is below it. The text is centered between two horizontal lines, one above 'THE' and one below 'RESORT'. The background consists of large, overlapping geometric shapes in shades of blue, red, and orange.

# THE LONDON RESORT

## The London Resort Development Consent Order

BC080001

### Environmental Statement Volume 3: Figures

#### Figure 13.5 – Structures within the Kent Project Site and interaction with intertidal and subtidal habitats

Document reference: 6.3.13.5

Revision: 00

December 2020

Planning Act 2008

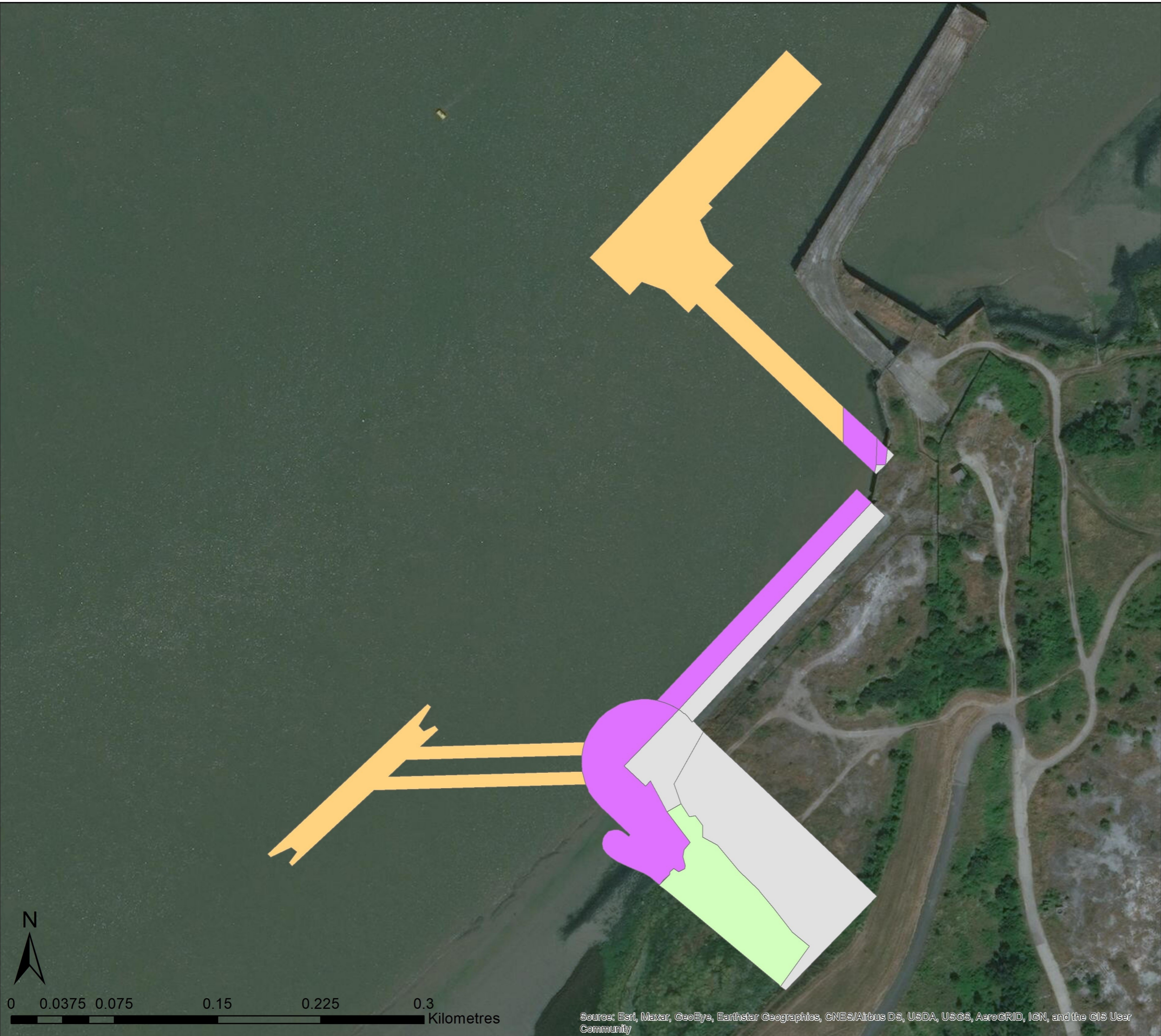
The Infrastructure Planning (Applications: Prescribed Forms and Procedure) Regulations 2009

Regulation 5(2)(a)

The Infrastructure Planning (Environmental Impact Assessment) Regulations 2017

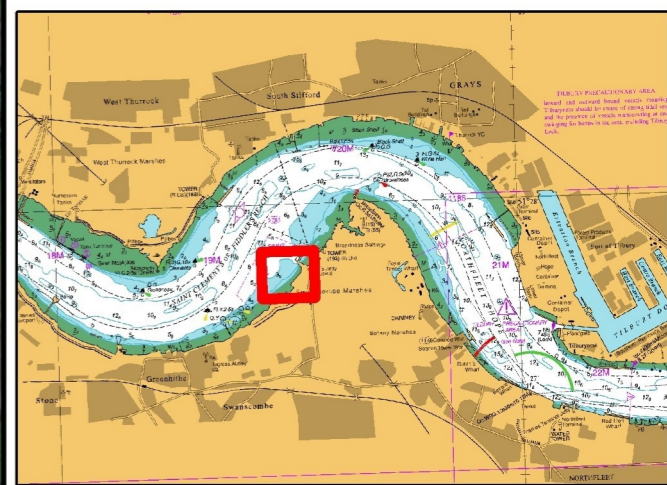
Regulation 12(1)

[This page is intentionally left blank]



### Legend

- Intertidal
- No change
- Saltmarsh
- Subtidal



Client  
 London Resort  
 Company Holdings Ltd

Project  
 The London Resort

Title  
 Figure 13.5: Structures within the Kent Project Site and interaction with intertidal and subtidal habitats.

<u>Scale</u>	<u>Drawn</u>	<u>Chk</u>	<u>Auth</u>
Not to scale	12/10/20	RA	AJ

<u>Coordinate System</u>	<u>Date</u>
WGS 1984	12/10/20



Source: Esri, Maxar, GeoEye, Earthstar Geographics, CNES/Airbus DS, USDA, USGS, AeroGRID, IGN, and the GIS User Community